

# PRODUCT CATALOGUE

**BLUEMOTION®**  
AUTOMATION

 **HYPERTHERM®**  
A Hypertherm Associates Brand  
Authorized Partner

# QT SERIES

PLATE - CNC PLASMA MACHINE



QT - 3015

MODEL	CAPACITY (mm)	Applications/ Features
	Width x Length	
QT-3015	3000x1500	Best suited for sheets less than 25mm thick, Budget Friendly
QT-4020	4000x2000	

**BLUEMOTION®**  
AUTOMATION

# PLASMA OPTIONS



PLASMA SOURCE	PIERCE CAPACITY (MS)
Powermax 45 SYNC	12mm
Powermax 105 SYNC	22mm
Powermax 125	25mm

# EXTRA OPTIONS

ITEM	DETAIL
FUME EXTRACTION	HERR FILTRATION AND EXTRACTION SYSTEM

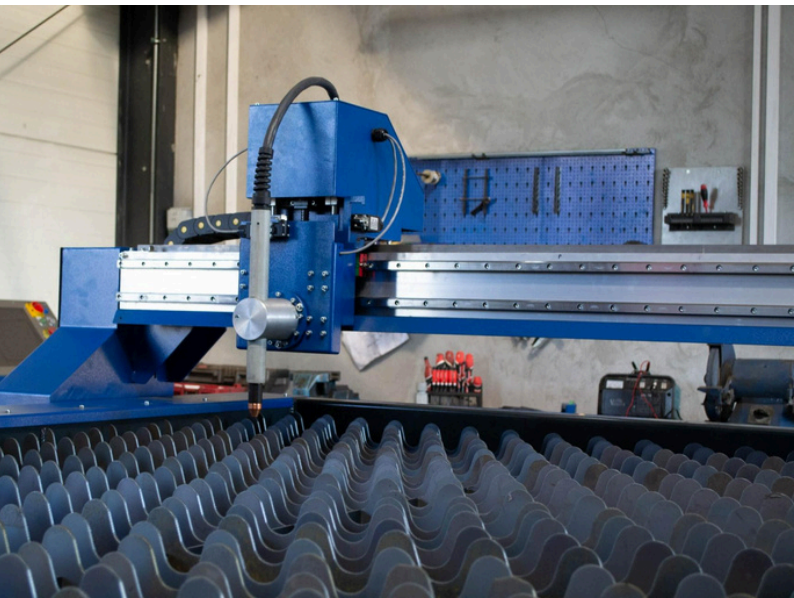
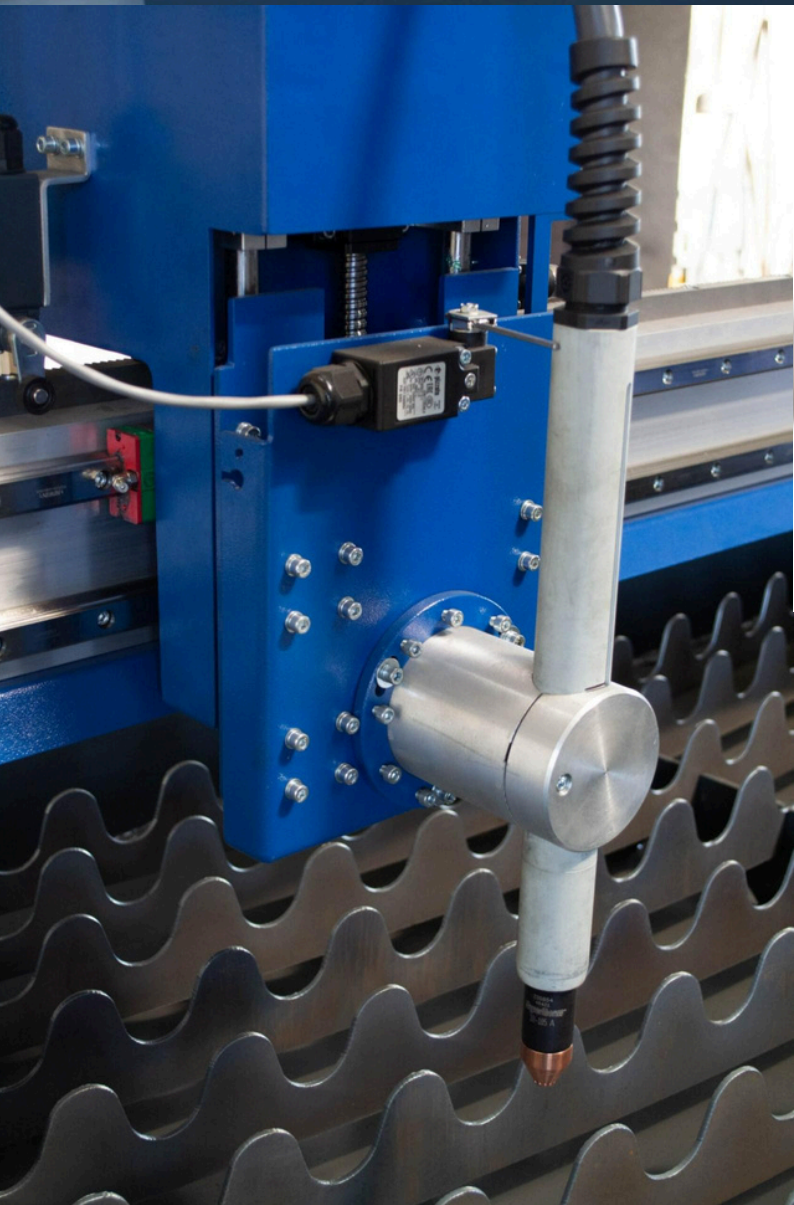
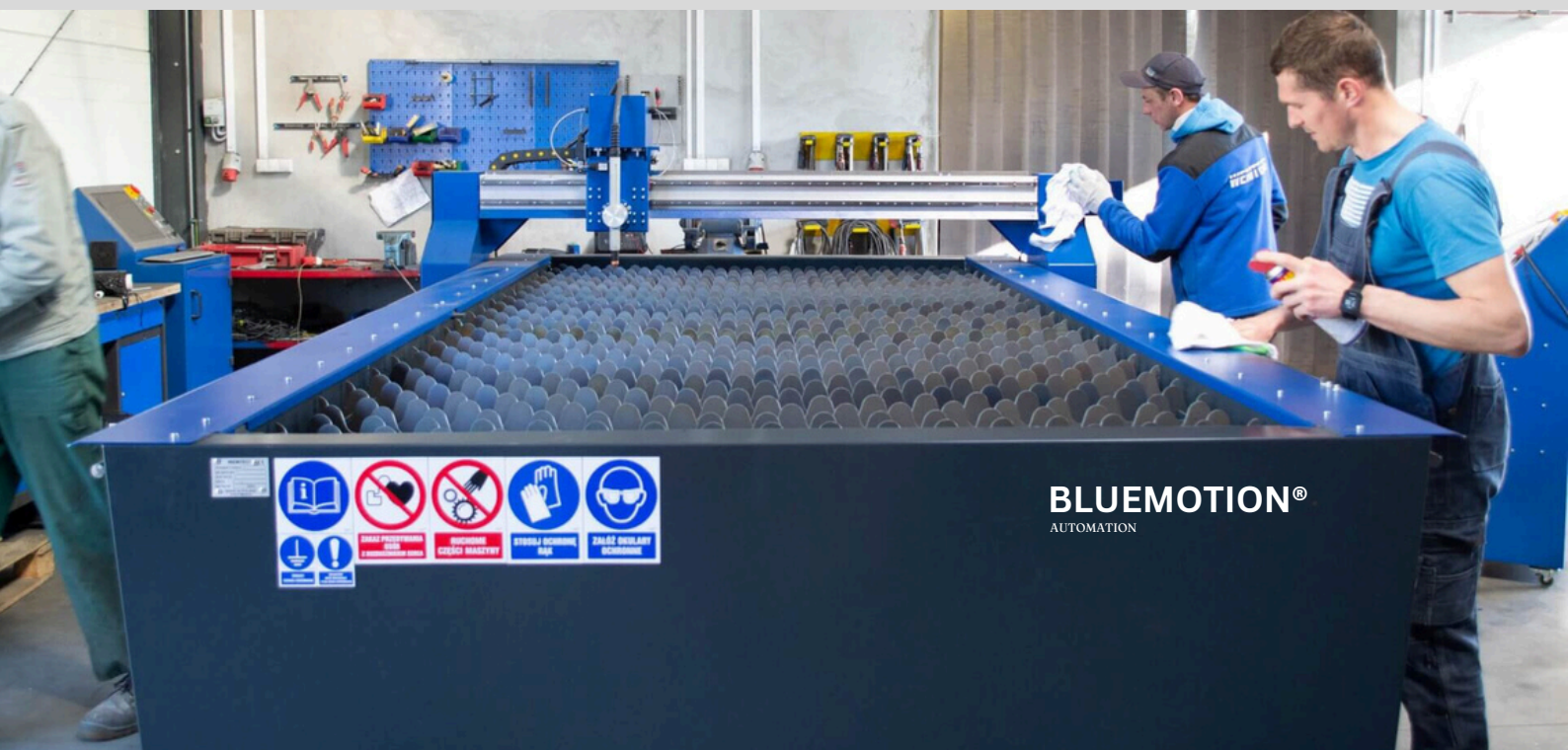
# QT SERIES

## PLATE - CNC PLASMA MACHINE

Specifications	
WORK AREA (QT-3015)	3000mm x 1500mm x 150mm (Length x Width x Height)
WORK AREA (QT-4020)	4000mm x 2000mm x 150mm (Length x Width x Height)
MACHINE WEIGHT(QT-3015)	1800 kg
MACHINE WEIGHT(QT-4020)	2350 kg
TABLE LOAD CAPACITY	5500 kg
TABLE STRUCTURE	Welded from thick-walled steel profiles
PRECISION MILLED RAILS	All Axis
TRAVEL SPEED	20m/min
POSITIONING ACCURACY	0.1mm
EXTRACTION BED	Zoned with grates, 250mm Round Output Pipe Connection
EXTRACTION DEMAND	5000m <sup>3</sup> /h
TORCH HEIGHT CONTROLLER	YES
ANTI-COLLISION	YES

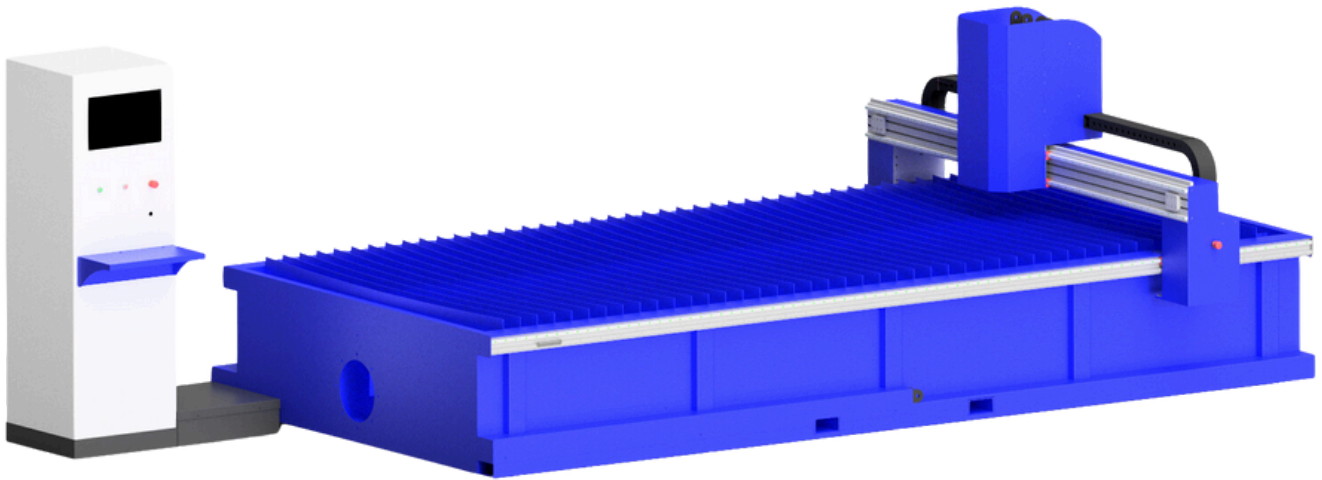


# PHOTOS



# HD SERIES

INDUSTRIAL PLATE - CNC PLASMA MACHINE



HD - 4020

MODEL	CAPACITY (mm)	Applications/ Features
	Width x Length	
HD-3015	3000x1500	Best suited for sheets less than 32mm thick, High Speed Machine
HD-4020	4000x2000	

# PLASMA OPTIONS



PLASMA SOURCE	PIERCE CAPACITY (MS)
Powermax 45 SYNC	12mm
Powermax 105 SYNC	22mm
Powermax 125	25mm
MAXPRO200	32mm

## EXTRA OPTIONS

ITEM	DETAIL
SCRIBE	HIGH SPEED PLATE MARKER
LASER ALIGNMENT	FAST SHEET SETUP
DRILLING	FOR SMALL HOLES OF 8mm OR LESS
FUME EXTRACTION	HERR FILTRATION AND EXTRACTION SYSTEM



# HD SERIES

## INDUSTRIAL PLATE - CNC PLASMA MACHINE

Specifications	
WORK AREA (HD-3015)	3000mm x 1500mm x 150mm (Length x Width x Height)
WORK AREA (HD-4020)	4000mm x 2000mm x 150mm (Length x Width x Height)
MACHINE WEIGHT(HD-3015)	2350 kg
MACHINE WEIGHT(HD-4020)	2650 kg
TABLE LOAD CAPACITY	9500 kg
TABLE STRUCTURE	Welded from thick-walled steel profiles
PRECISION MILLED RAILS	All Axis
TRAVEL SPEED	30m/min
POSITIONING ACCURACY	0.1mm
EXTRACTION BED	Zoned with grates, 300mm Round Output Pipe Connection
EXTRACTION DEMAND	5000m3/h
TORCH HEIGHT CONTROLLER	Yes
ANTI-COLLISION	Yes
LASER ALIGNMENT	Yes
SCRIBE	Yes (Optional)
DRILLING	Yes (Optional)

# PHOTOS

---

A close-up photograph of a plasma cutting torch in operation. The torch is positioned vertically, and a bright, intense blue-white light is visible at the point of contact with the metal workpiece. A large, dense spray of bright orange sparks is being ejected from the cut, extending horizontally to the right. The background is dark and out of focus.

**PLASMA**

A close-up photograph of a red laser line being projected onto a metal surface. The laser line is a bright red, slightly blurred streak that runs diagonally across the frame. The metal surface is dark and has some visible texture and wear.

**LASER ALIGN**

A close-up photograph of a scribe tool. The tool is a vertical metal rod with a sharp, pointed tip. It is mounted on a blue machine frame. The tool is positioned vertically, and the tip is just above a light-colored, flat surface.

**SCRIBE**

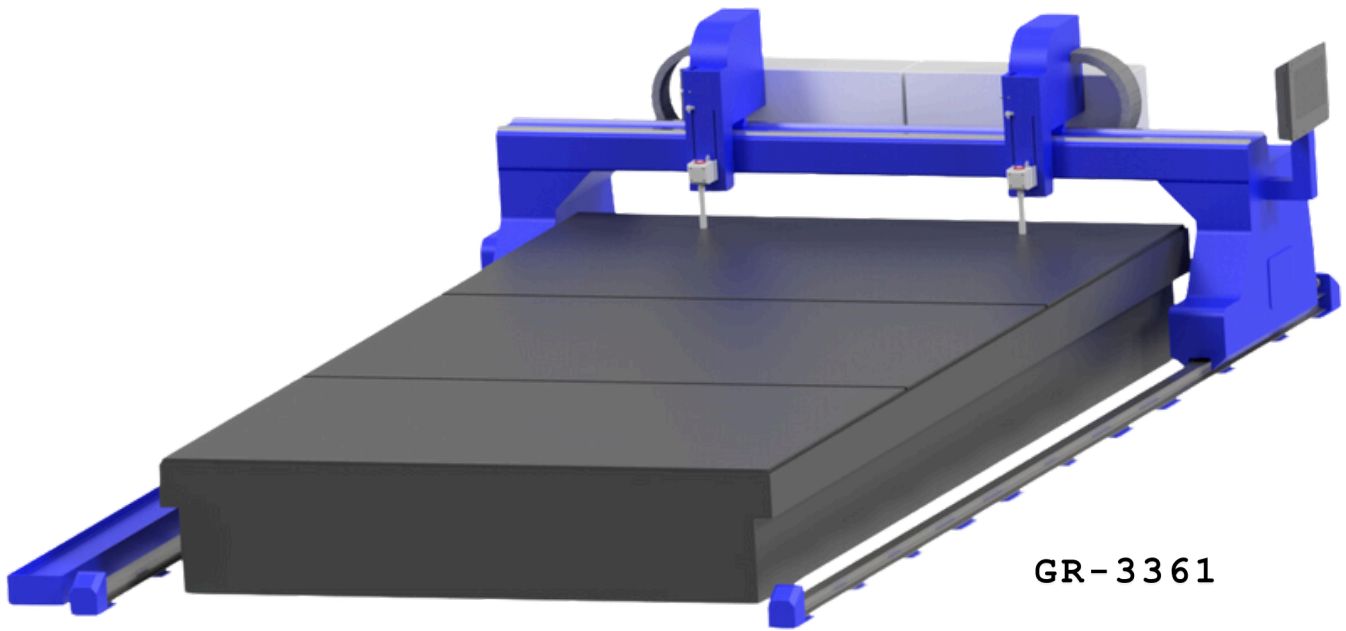
A close-up photograph of a drilling machine. The machine is a large, blue, industrial-grade unit. The drill bit is visible, and it is positioned vertically, ready to drill into a metal workpiece. The machine is mounted on a sturdy base.

**DRILLING**



# GR SERIES

HEAVY INDUSTRIAL - CNC PLASMA MACHINE



GR-3361

## Applications/ Features

Heavy Industrial Cutting, High Definition Cutting, Heavy Plate Processing

MODEL	CAPACITY (mm)
	Width x Length
GR-2141	2100x4120
GR-2161	2100x6180
GR-2182	2100x8240
GR-21103	2100x10300

MODEL	CAPACITY (mm)
	Width x Length
GR-3320	3300x2060
GR-3341	3300x4120
GR-3361	3300x6180
GR-3382	3300x8240
GR-33103	3300x10300

# PLASMA OPTIONS



PLASMA SOURCE	PIERCE CAPACITY (MS)
Powermax 125	25mm
MAXPRO200	32mm
XPR 170	40mm
XPR 300	50mm
XPR 460	64mm

# GR SERIES

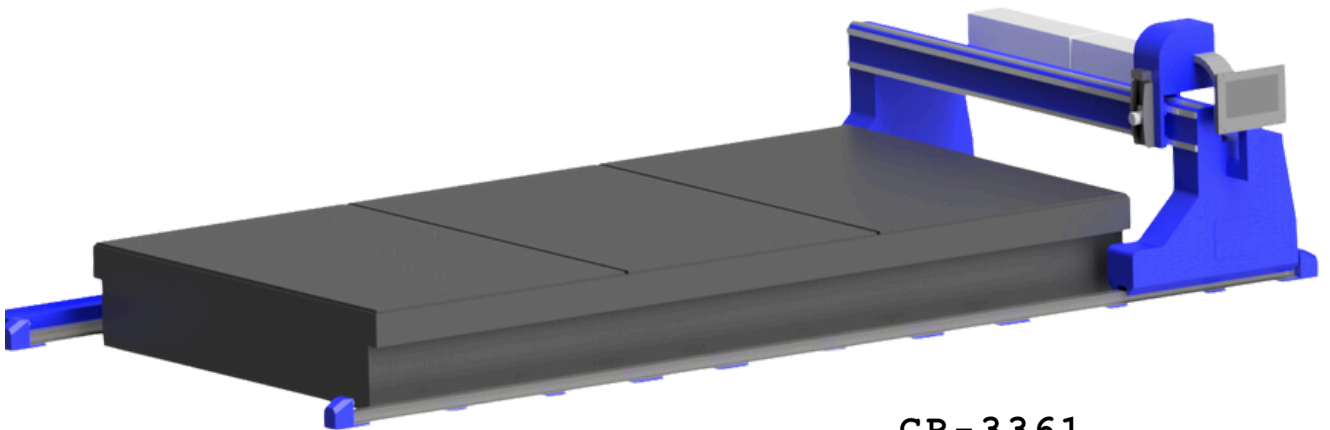
## HEAVY INDUSTRIAL - CNC PLASMA MACHINE

Specifications	
Z CLEARANCE	250mm
NUMBER OF PLASMA STATIONS	Up to 4
NUMBER OF OXYFUEL STATIONS	Up to 10
TABLE STRUCTURE	Heavy Steel Rail and Heavy Welded Profiles
PRECISION MILLED RAILS	All Axis
TRAVEL SPEED	30m/min
POSITIONING ACCURACY	0.1mm
EXTRACTION BED	Zoned with grates, 400mm Round Output Pipe Connection
EXTRACTION DEMAND	8000m <sup>3</sup> /h
TORCH HEIGHT CONTROLLER	Yes
ANTI-COLLISION	Yes
LASER ALIGNMENT	Yes
CONTROLLER	Hypertherm EDGE CONNECT TC
DRIVE SYSTEM	EtherCAT Servo Motors on all axis
DUAL GANTRY	Yes (Optional)
TRUEHOLE	Yes
HIGH DEFINITION	Yes

POWERED BY  
**HYPERTHERM**



**HYPERTHERM  
CONTROLLER**



**GR-3361**

**H** **HYPERTHERM**  
A Hypertherm Associates Brand

INTRODUCING THE NEW

**XPR460**  
PLASMA SYSTEM

Power your  
profitability

**H** **HYPERTHERM** **XPR460**  
A Hypertherm Associates Brand

# PT SERIES

PROFILE - CNC PLASMA MACHINE



PT-3015

MODEL	CAPACITY (mm)	Applications/ Features
	Length	
PT-3015	3000	Automated tube coping and profiling
PT-6015	6000	

**BLUEMOTION®**  
AUTOMATION



# PLASMA OPTIONS

---



PLASMA SOURCE	PIERCE CAPACITY (MS)
Powermax 45 SYNC	12mm
Powermax 105 SYNC	22mm
Powermax 125 SYNC	25mm

# EXTRA OPTIONS

---

ITEM	DETAIL
FUME EXTRACTION	HERR FILTRATION AND EXTRACTION SYSTEM

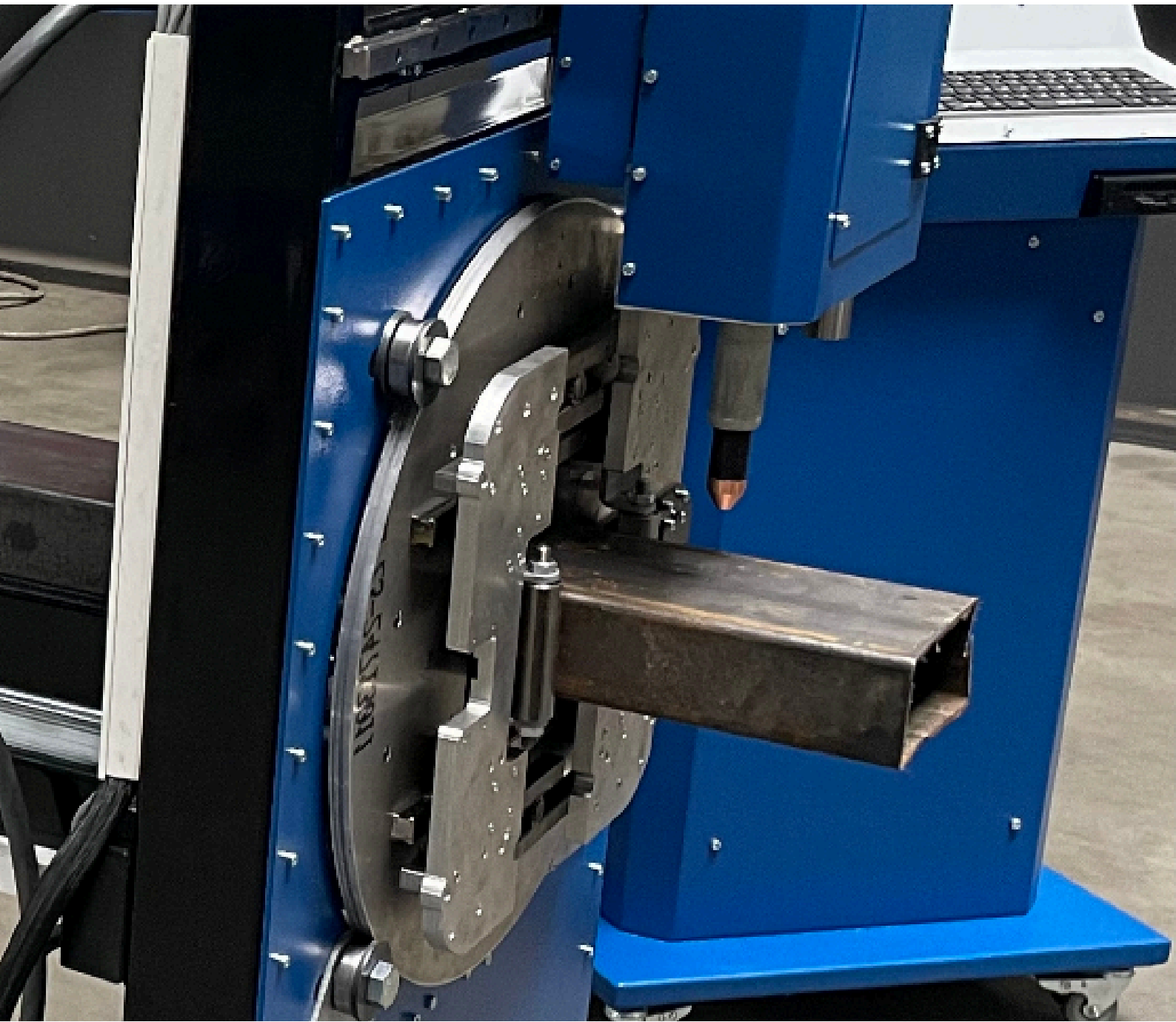
# PT SERIES

## PROFILE - CNC PLASMA MACHINE

Specifications	
WORK LENGTH CAPACITY (PT-3016)	3000mm
WORK LENGTH CAPACITY (PT-6016)	6000mm
PROFILE CAPACITY	160mm x 160mm (SQUARE), 160mm Diameter (ROUND)
WORK WEIGHT CAPACITY	500 kg
MACHINE WEIGHT (PT-3016)	450 kg
MACHINE WEIGHT (PT-6016)	550 kg
MACHINE DIMENSIONS (PT-3016)	3700mm x 1250mm x 1100mm (Length x Width x Height)
MACHINE DIMENSIONS (PT-6016)	6700mm x 1250mm x 1100mm (Length x Width x Height)
TRAVEL SPEED	20m/min
POSITIONING ACCURACY	0.1mm
TABLE STRUCTURE	Welded from thick-walled steel profiles
STEADY REST	Yes (PT-6016 model only)
TORCH HEIGHT CONTROLLER	Yes
ANTI-COLLISION	Yes
THROUGH COOLANT	Yes

# PHOTOS

---



## Air plasma: Powermax®

Light industrial single gas (air, nitrogen, or F5) cutting systems, great for duct cutting, pipe cut-off, beveling, and robotic cutting.



## HyPerformance plasma

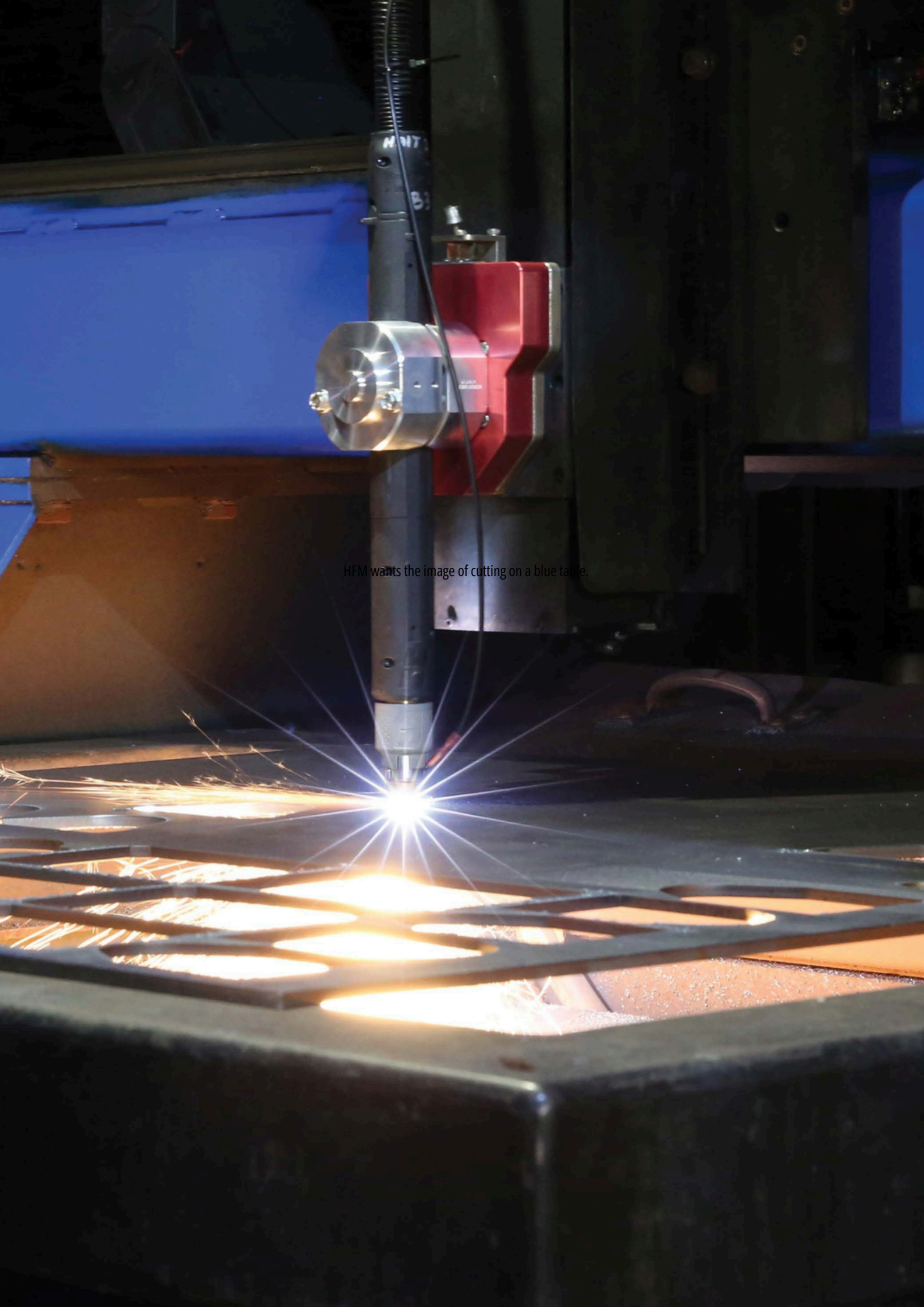
HyPerformance plasma systems deliver HyDefinition® cut quality at a fraction of the operating costs. By incorporating our proven HyDefinition, LongLife®, PowerPierce®, HDi® and True Hole® technologies, HyPerformance plasma boosts overall performance, productivity and profitability. The systems offer unmatched process flexibility to cut, bevel and mark metals, including 3D shapes, up to 160 mm (6-1/4") thick.



## XPR® plasma

XPR plasma represents the most significant advance in mechanized plasma cutting technology, ever. This latest generation system redefines what plasma can do by expanding its capabilities and opportunities in ways never before possible. With unmatched X-Definition® cut quality on mild steel, stainless steel and aluminum, XPR increases cut speed, dramatically improves productivity and significantly reduces operating costs. New ease-of-use features and engineered system optimization make XPR easier to run with minimal operator intervention, while also ensuring optimal performance and unmatched reliability.





HFM wants the image of cutting on a blue table.



# BLUEMOTION®

AUTOMATION



089 952 6274



[info@bluemotioncnc.com](mailto:info@bluemotioncnc.com)



[www.bluemotioncnc.com](http://www.bluemotioncnc.com)



Ballynoe, Cork, Ireland

